



Cleaning Manual

TopBrewer Pro & Compact

1. Brewer Cleaning (daily)
2. Milk Cleaning (3 times weekly)
3. Choco Cleaning (2 times weekly)

scanomat



WHAT YOU NEED FOR CLEANING

Brewer Cleaning



Yellow Tabs, 25 pcs
Brew Group Cleaner

SKU 4302339



Cleaning Brush

SKU 4302319



Tip Brushes

SKU 4302349



TopBrewer Waste bags
Bio-degradable

SKU 017



Cleaning Head

SKU 2008371



In general
Cleaning Cloth and
Paper Towel

Milk Cleaning



Milk Cleaner - Blue
Alkaline

SKU 4302830



Milk Cleaner - Green
Acidic

SKU 4302831



Jug 1000 ml (x2)

SKU 4302657

Choco Cleaning



Milk Cleaner - Blue
Alkaline

SKU 4302830



Choco Cleaning Can
2,5 l

SKU 4302786



Jug 1000 ml

SKU 4302657

Suggested weekly cleaning schedule

Monday	Tuesday	Wednesday	Thursday	Friday
Brewer	Brewer	Brewer	Brewer	Brewer
Milk	Choco	Milk	Choco	Milk

BREWER CLEANING

PERFORM DAILY



USING YELLOW TABS



PRO



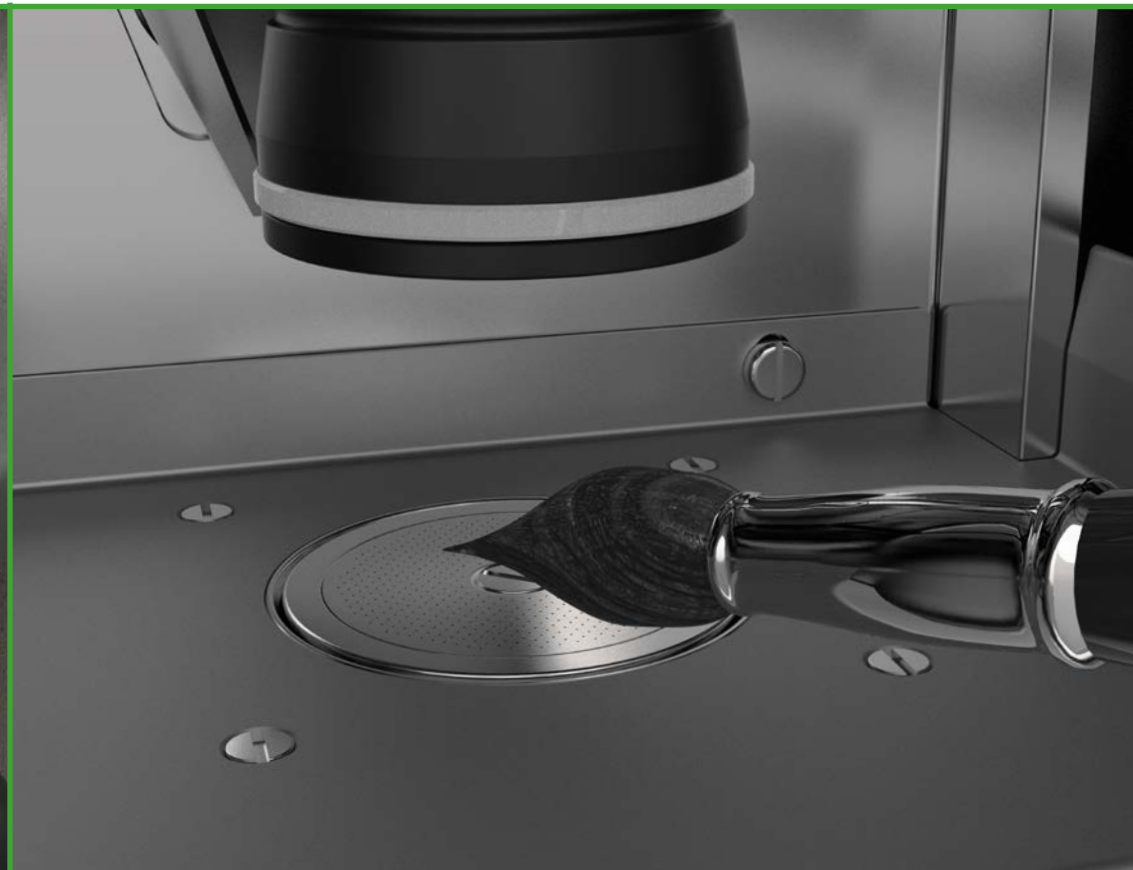
1

OPEN THE STAINLESS STEEL DOOR

The machine goes into neutral mode with the bottom piston raised, ready for cleaning when the door is opened.

PRO: Open the hinged door by pushing the right side until it pops out and pull it towards you.

COMPACT: Open the door by pivoting it outwards from the bottom and sliding it into a horizontal hold position.



2

MOVE SCRAPER

The scraper can be moved freely to allow access to all components.

Start by pulling out the scraper arm (black) on the brewing unit.



Danger hot

3

REMOVE GROUND COFFEE

Brush around the grey base plate in order to remove any ground coffee deposits.

Brush the deposits into the dreg bin.

Pull out the dreg bin, empty it and clean the area.



Danger hot



4

CLEAN TOP AND BOTTOM PISTON

Having removed most of the coffee grounds, wipe the top piston sieve (underside) as well as around the top piston O-ring (white ring).



Danger hot

The stainless steel bottom piston must be completely clean with no coffee remains.

5

ADD CLEANING TAB

Push the scraper back into the position as shown. Place a TopBrewer Yellow cleaning tablet inside the scraper.



Danger hot

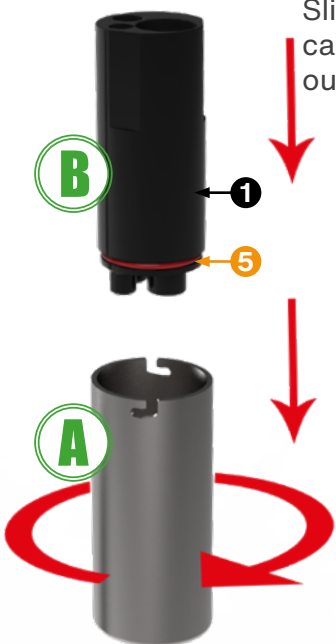
Close the door on the machine.

6

REMOVE CASING AND HOUSEING

Gently remove the outer metal casing (A) of the milk foamer by twisting the metal head clock-wise.

Slide down the black casing (B) and clean the outlet with a damp cloth.



SKUs for reorder

O-rings

- 1 4200446
- 2 4200445
- 3 4302169
- 4 990480005000
- 5 4200444

Heads/milkfoamer

- 1 2007109 / 2009623
- 2 2008259
- 3 2007424
- 4 2008371

7

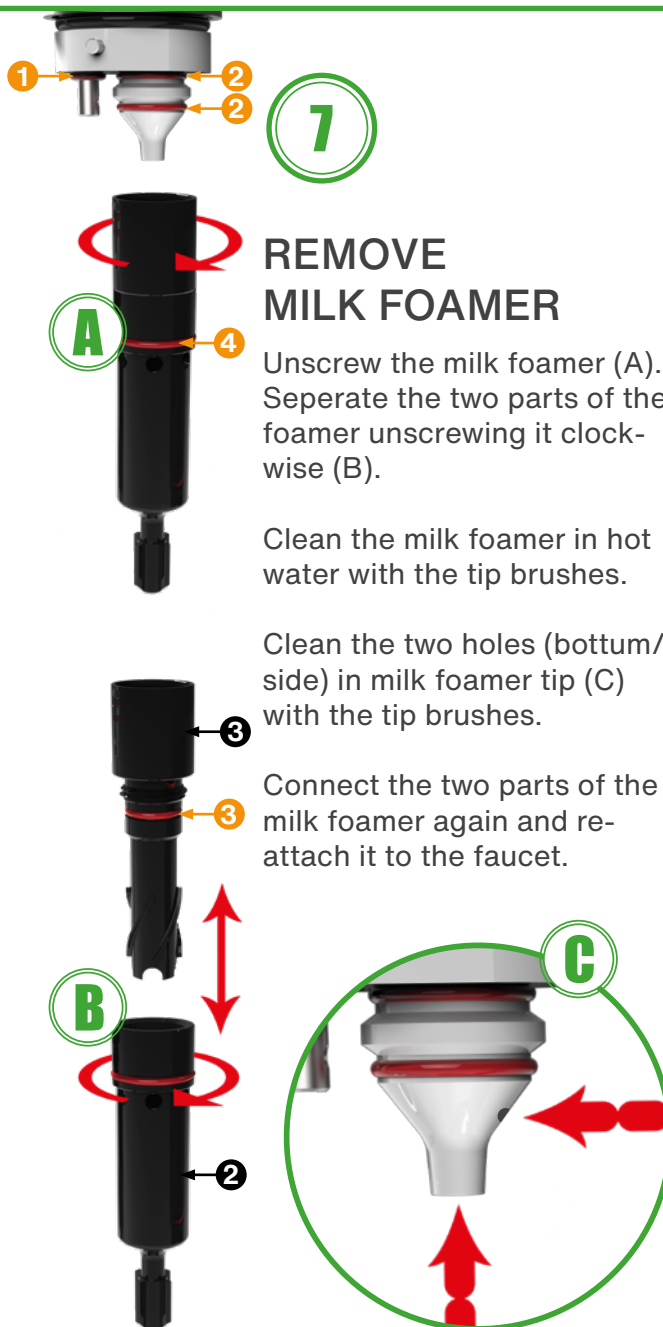
REMOVE MILK FOAMER

Unscrew the milk foamer (A). Separate the two parts of the foamer unscrewing it clock-wise (B).

Clean the milk foamer in hot water with the tip brushes.

Clean the two holes (bottom/ side) in milk foamer tip (C) with the tip brushes.

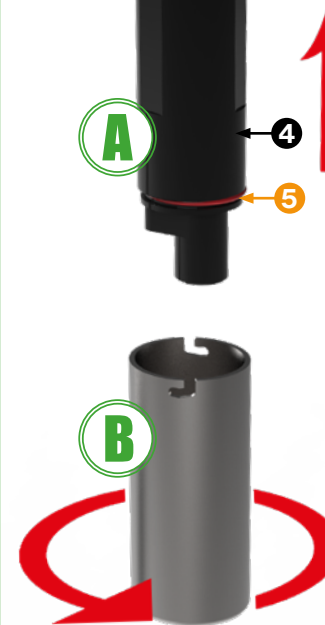
Connect the two parts of the milk foamer again and re-attach it to the faucet.



8

PLACE CLEANING HEAD

Fit the Cleaning Head (A) onto the faucet by sliding it onto the milk foamer. Mount the outer metal casing (B) by twisting it anti-clockwise onto the faucet.



**The Cleaning Head ensures proper backflush which cleans the milk foamer as well as the milk lines that go into the fridge. The hot water goes directly into the drain.*

! BE EXTRA AWARE !

Take care that the O-rings (illustrated red) remain in position during and after cleaning.



9

START CLEANING PROCESS

Push the faucet all the way down the the diptray.

Select "CLEAN" from the left pane menu on the iPad. The process will take approximately 2,5 minute and "Machine is ready" will appear in the status bar in the App once completed.

If the cleaning process is accidentally stopped please start it again from the menu.

10

REMOVE CLEANING HEAD

Gently remove the outer metal casing (A) of the milk foamer by twisting the metal head clockwise.

Remove the cleaning head (B) from the faucet.



11

RE-ATTACH HOUSING/CASING

Re-attach the milk foamer housing (A). Then re-attach the outer metal casing by twisting the metal head anti-clockwise (B).

A

B



12

WIPE

Open the door to the machine, pull out the scrubber arm and wipe the area and pistons.

Close the door.

13

PRIME

Prior to use, prime the TopBrewer by dispensing one espresso or coffee drink. Discard the drink.

Now the brewer is clean and ready for use.

MILK CLEANING

PERFORM 3 TIMES A WEEK

Before the milk clean, please ensure that you have done the brewer cleaning. This is the optimal way to maintain your TopBrewer.



We recommend doing the milk clean 3 times a week.

For every 4th time use of the blue alkaline milk fat remover use the green descaler once disregarding the weekly cleaning schedule.

*Some milk types might require more cleaning, depending on how homogenic the milk is, the fat content, if it's organic etc.

USING LIQUID CLEANERS



PREPARE MILK CLEAN



CLEAN WATER

Fill a jug with clean **cold** tap water, approx. 300 ml.

MIX CLEANING LIQUID

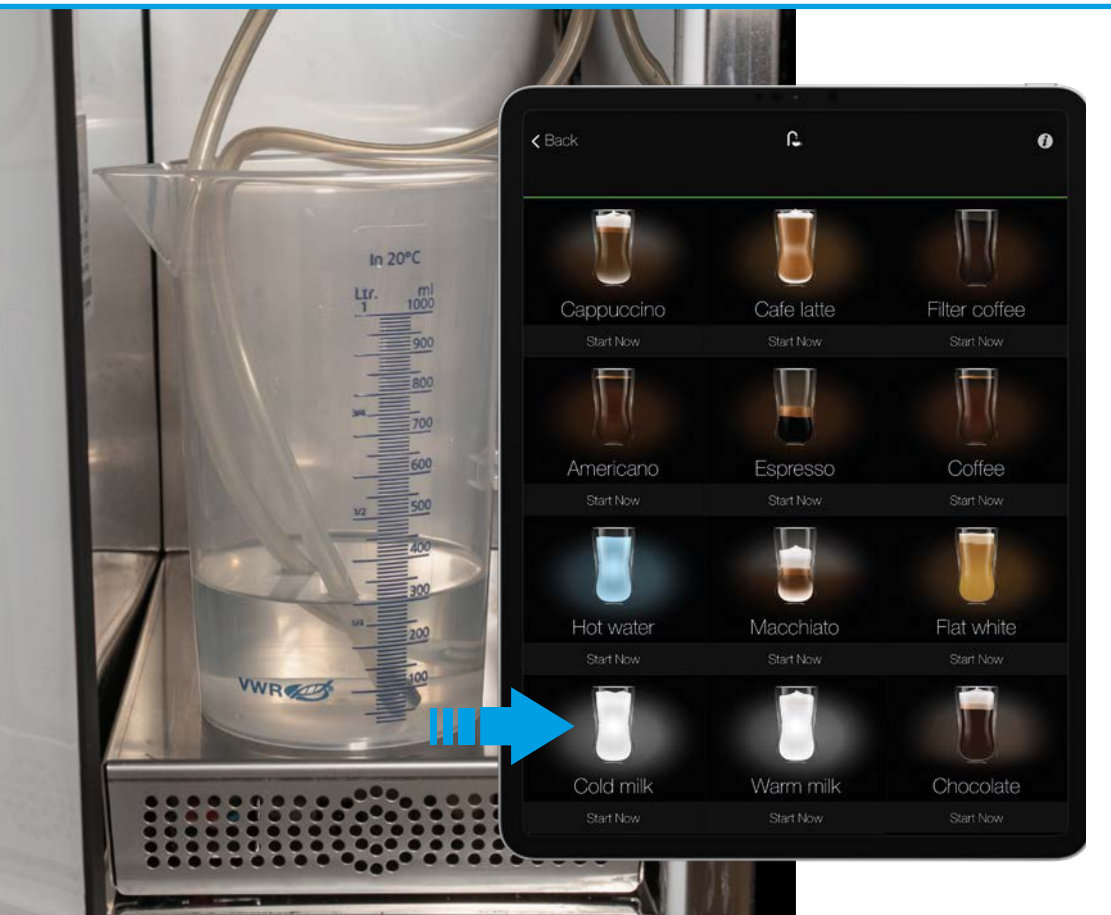
Fill another jug with 600 ml of **hot/steaming** water from the TopBrewer, or hot tap water.

Add 30 ml of cleaning liquid to the water.

! *If the fridge has dual milk lines, mix double of the cleaning liquid.*

PUSH FAUCET DOWN

Push the faucet all the way down to the dip tray to away liquid splash during the cleaning process.



1

RINSE WITH COLD WATER

Place the jug inside the fridge and insert the milk line(s) into the water.

Select “Cold Milk” or “Warm Milk” in the menu on the iPad. Run **1 cup** through to push out the milk in the lines.

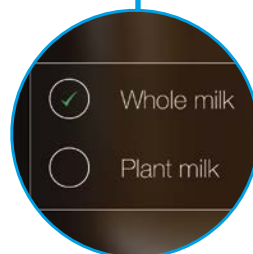
If there is dual milk lines, do this step for both milk choices.

2

RINSE WITH CLEANING LIQUID

Replace the jug in the fridge with the hot water jug. Insert the milk line(s) into the water.

Select “Cold Milk” or “Warm Milk” in the menu on the iPad.



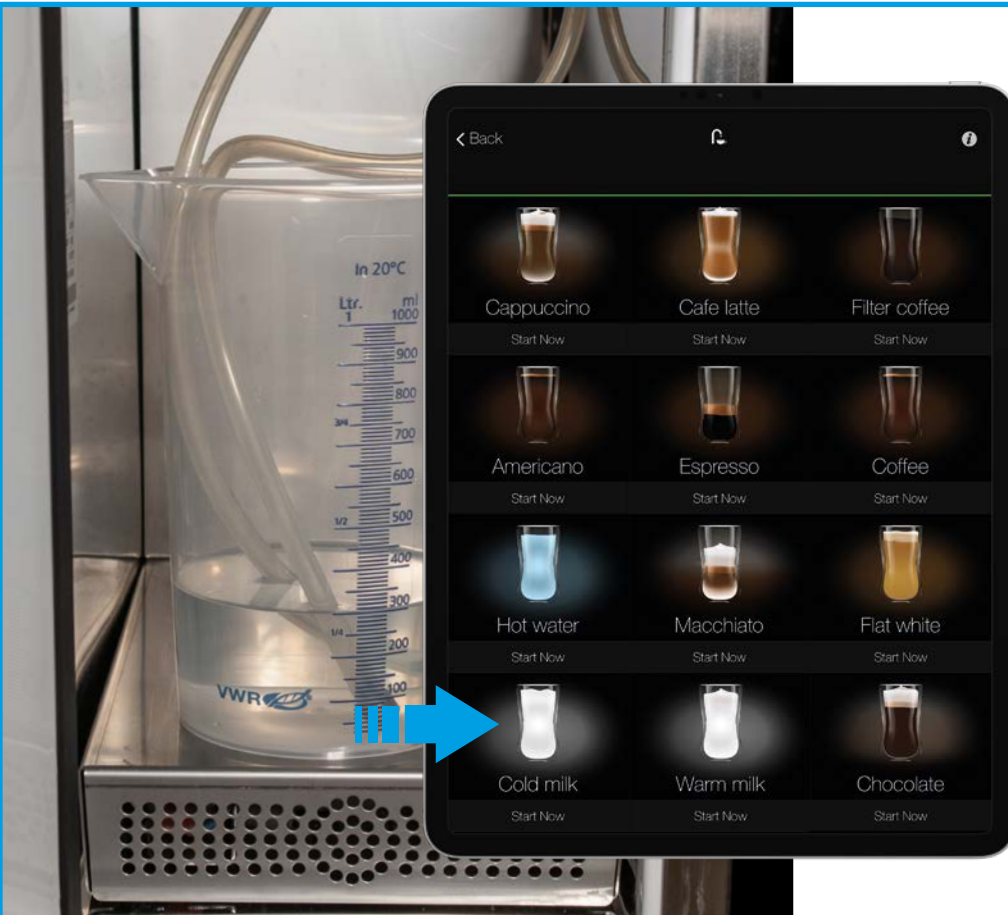


CUSTOMISE SIZE AND CUPS

Slide the size and number of cups to maximum and select “Start now”. Repeat until the jug is empty.

If there is no customise option in the menu, press on the middle jug button on the machine display three times (display *10) and then the Warm Milk button. This will run 10 times of a normal cup size. Press STOP to cancel.

If there is dual milk lines, do this step for both milk choices.



3

RINSE WITH COLD WATER

Replace the jug in the fridge with the cold water jug. Insert the milk line(s) into the water.

Select “Cold Milk” or “Warm Milk” in the menu on the iPad. Run **1 cup** through to rinse the line(s).

If there is dual milk lines, do this step for both milk choices.

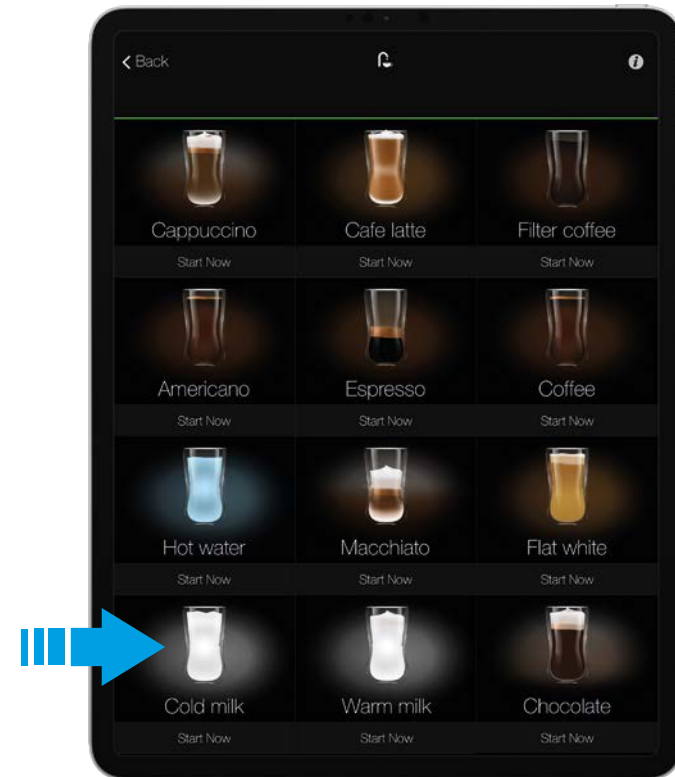


4

WIPE FRIDGE AND ADD MILK

Remove the jug and wipe the fridge inside with a damp cloth.

Place the milk can or container, add the milk lines and close the fridge.



5

PRIME WITH MILK DRINK

Prior to use, prime the TopBrewer milk system by dispensing a small cup of milk.

Discard the drink.

Now the milk system is clean and ready for use.

CHOCO **CLEANING**

PERFORM TWICE A WEEK

USING CHOCO CLEANING SYSTEM



1

PREPARE CHOCO CLEANING

Mix 400 ml of hot tap water with 20 ml of milk fat cleaning liquid (blue) in a jug and add it to the choco cleaning can (make sure the lever is closed on the tube).

On the choco rack close the tube from the choco box and disconnect it from the rack. Wipe away any left over chocolate from the connector.

2

CONNECT CLEANING CAN

Place the cleaning can on the table, with the black stud facing down (avoid spilling the liquid) and connect the tube to the choco rack.

Turn the lever vertically to open.

Push the faucet all the way down to the diptray.



3

START CLEANING

Select the hot chocolate drink from the menu on the iPad. Maximise the size and cup numbers, select "Start now". Repeat until the can is empty.

If there is no customise option start single chocolate drinks repeatedly.

4

CLEANSE WITH WATER

Add 400 ml clean cold water to the cleaning can. Select the hot chocolate drink, maximise the size and cup numbers, select "Start now".

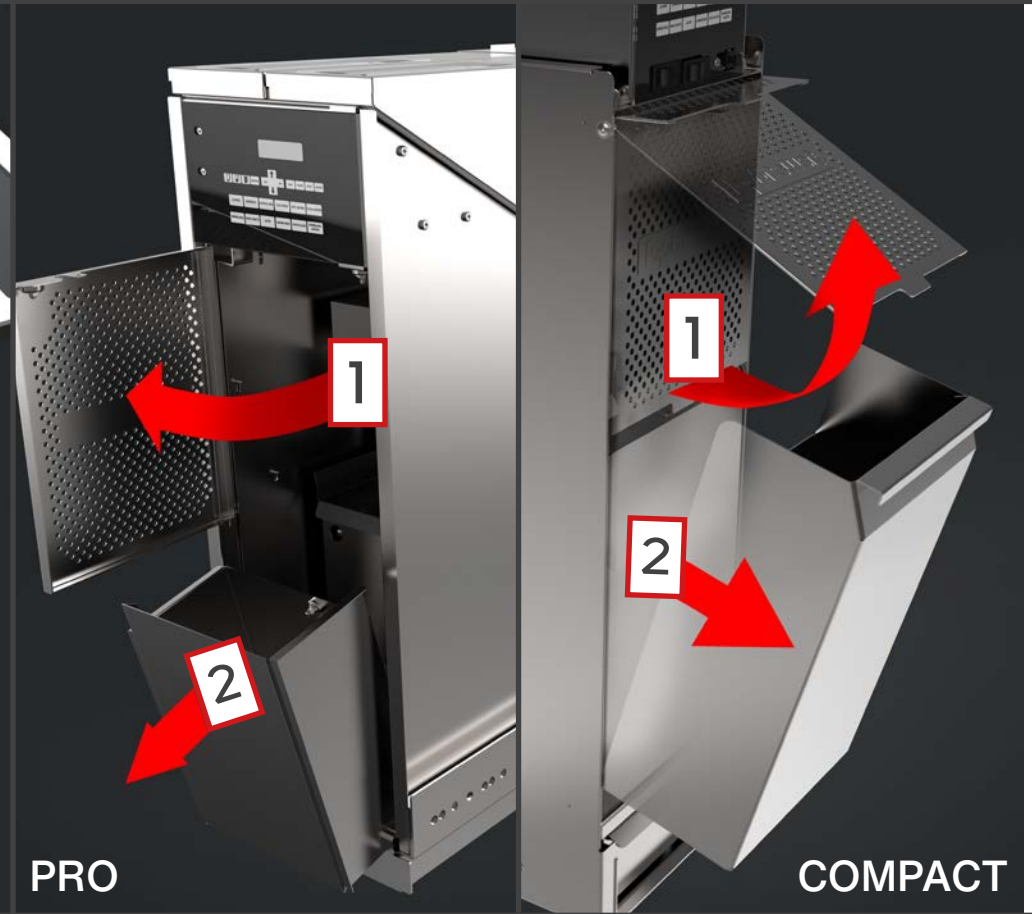
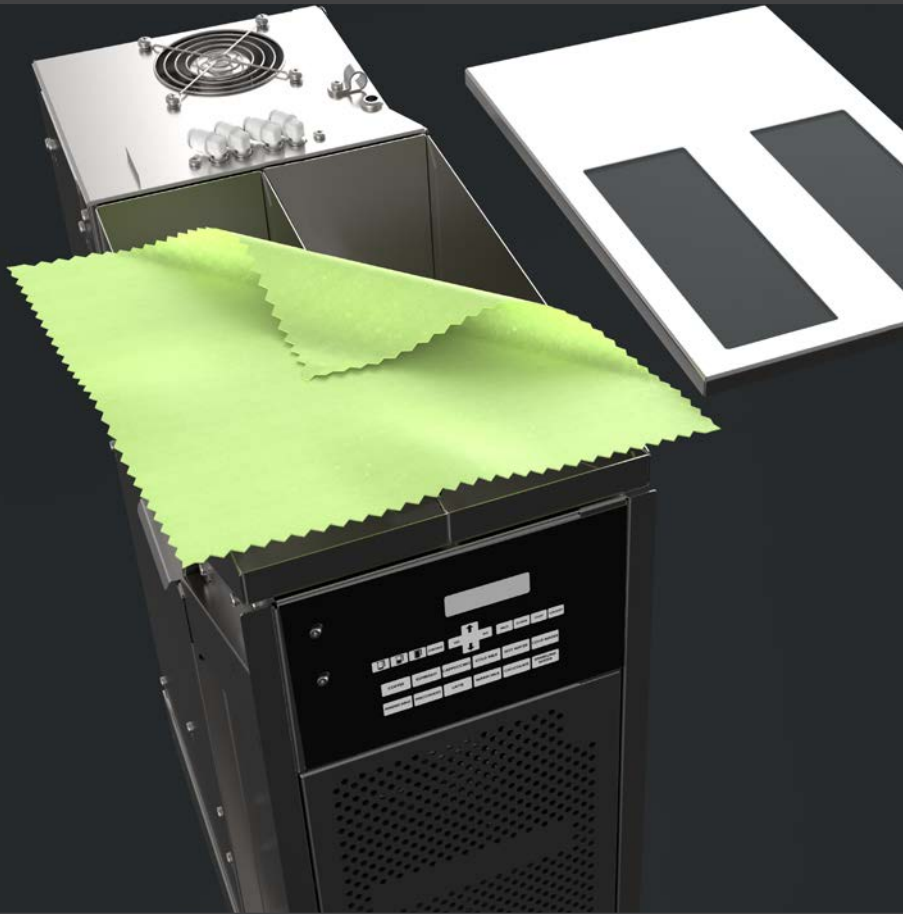
Repeat until the can is empty.

5

RECONNECT & PRIME

Disconnect the cleaning can tube. Wipe off the connector on the rack.

Reconnect the choco box tube. Open the valve and run chocolate drink(s) from the iPad menu until the chocolate is back in the system.



IMPROVING TASTE EXPERIENCE

Remove lid from bean hopper and wipe with a damp cloth prior to filling it with beans.

Fresh Amokka® Coffee beans have a great flavour, therefore do not overfill the hoppers to allow beans to always stay their best - store unused beans in a sealed bag somewhere cold.



REMOVING COFFEE WASTE

In the status bar of the app, the machine will notify you when the coffee dreg bin is full. When removing the bin (keep switched on) the unit will reset its counting system and will assume that you have emptied it. Therefore empty the dregs bin every time it is removed and follow above illustration for either Pro or Compact.